



Version 190312

# FIP Gauges Installation Guide

Thank you for supporting FSX Times.

Installing my Gauges for the Logitech (previously Saitek) Flight Instrument Panels (FIPs) is straightforward.

Just unzip the package (either with SINGLE or BUNDLE gauges) and run the installer inside. Then follow the instruction on screen, if any. That will do.

In general, the installation process involves just a few mouse clicks.

For details

See **SECTION 1**

If you are using the **Logitech Driver**, and are going to install any of my **BUNDLE Gauges**.

See **SECTION 2**

If you are using the **Logitech Driver**, and are going to install any of my **SINGLE Gauges**.

See **SECTION 3**

If you are using **SPAD.neXt**, and are going to install any of my Gauges.

See **Appendix 1**

If you have both **Logitech Driver** and **SPAD.neXt** installed on your system.

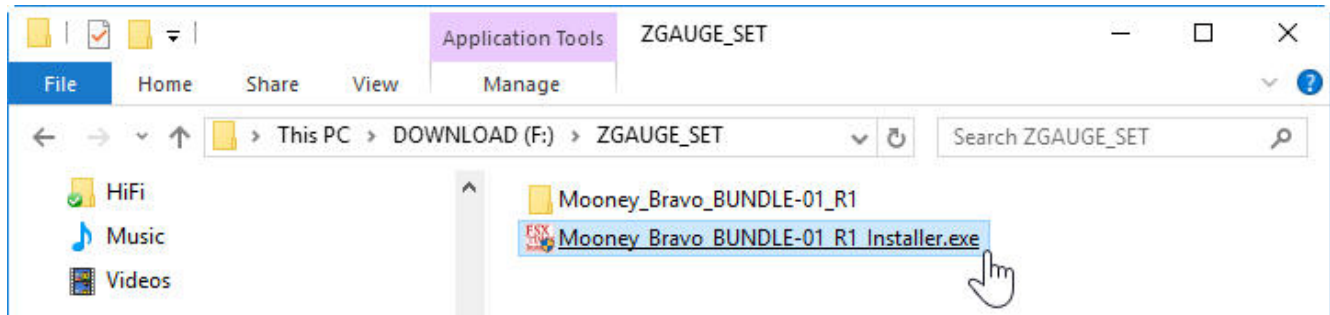
Note 1: My recommended driver is **8.0.132.0** from Logitech which is used in this guide. Older Saitek driver (though not recommended) are put in parentheses for reference just in case.

Note 2: This Installation Guide will use my Mooney Bravo Gauges for demonstrations. **The same processes apply to all my other gauges.**

## SECTION 1:

### INSTALLING BUNDLE GAUGES on Systems using Logitech Driver

1. Unzip the bundle package to any location of your choice.
2. Run the installer in the package (e.g. **Mooney\_Bravo\_BUNDLE-01\_R1\_Installer.exe**)



3. In a few seconds, a similar message as shown below will come up showing the Bundle Gauges are installed.



During installation, the existing "LogiFlightSimX.xml" (or "SaiFlightSimX.xml") will be renamed to "LogiFlightSimX\_Backup01.xml" (or "SimFlightSimX\_Backup01.xml") and stored under the same directory.

A NEW "LogiFlightSimX.xml" (or "SaiFlightSimX.xml") containing ONLY the Bundle Gauges (e.g. Mooney Bravo) will be created. The file will open automatically for inspection after installation. You could re-order or modify the content, if necessary.

4. After saving (or closing) the file, you can start flying with the new gauges. But you may have to press the Up/Down buttons on the FIPs to select the new gauges when using them the first time.

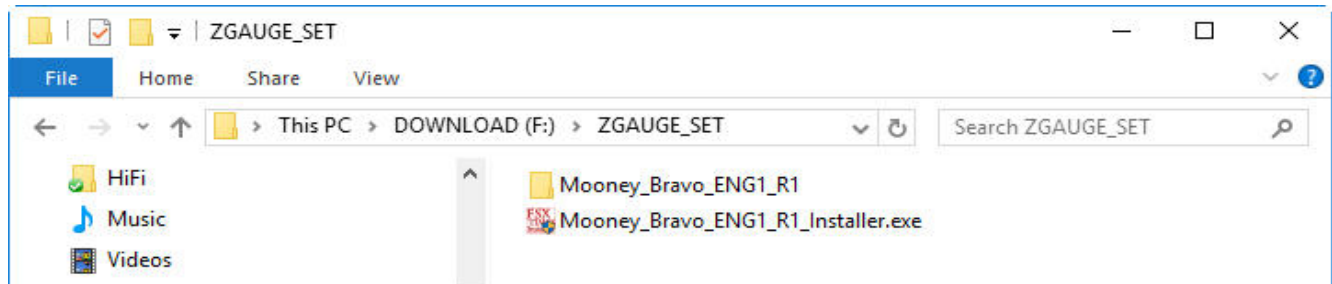
#### NOTE:

- If needed, re-run the installer.
- Many of my gauges come with two versions (Clean and Extended). The Extended one has extra features on top of the basic functions. Try and choose the one that best fits your needs.
- There are extra versions specifically customized for SPAD.neXt. These gauges have the notion of "\_SPNext" in their filenames (e.g. B58\_ATT\_R4\_SPNext.xml). **DO NOT USE** these files with the Logitech Driver. They will not run properly.
- See **Appendix 3** for information about gauge backup.

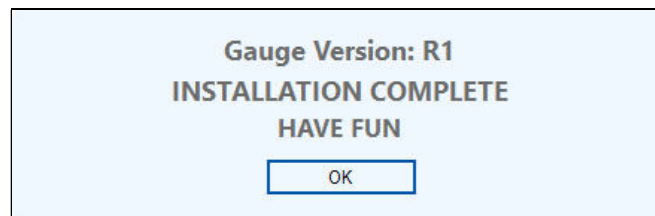
## SECTION 2:

### INSTALLING SINGLE GAUGES on Systems using Logitech Driver

1. Unzip the gauge package to any location of your choice.
2. Run the installer in the package (e.g. **Mooney\_Bravo\_ENG1\_R1\_Installer.exe**)



3. In a few seconds, a similar message as shown below will pop up showing the gauge is installed.



During installation, the installer will make a backup copy of the existing "LogiFlightSimX.xml" (or "SaiFlightSimX.xml") and rename it as "LogiFlightSimX\_Backup01.xml" (or "SimFlightSimX\_Backup01.xml") in the same directory.

New entry (or entries) of the gauge (e.g. Mooney\_Bravo\_ENG1) being installed will be **ADDED TO THE END** of the existing "LogiFlightSimX.xml" (or "SaiFlightSimX.xml").

The "LogiFlightSimX.xml" (or "SaiFlightSimX.xml") will be opened automatically for inspection after installation. You could re-order or modify the content, if necessary.

5. After saving (or closing) the file, you can start flying with the new gauges. But you may have to press the Up/Down buttons on the FIPs to select the new gauges when using them the first time.

#### NOTE:

- If needed, re-run the installer.
- Many of my gauges come with two versions (Clean and Extended). The Extended one has extra features on top of the basic functions. Try and choose the one that best fits your needs.
- There are extra versions specifically customized for SPAD.neXt. These gauges have the notion of "**\_SPNext**" in their filenames (e.g. B58\_ATT\_R4\_SPNext.xml). **DO NOT USE** these files with the Logitech Driver. They will not run properly.
- See **Appendix 3** for information about gauge backup.

## SECTION 3:

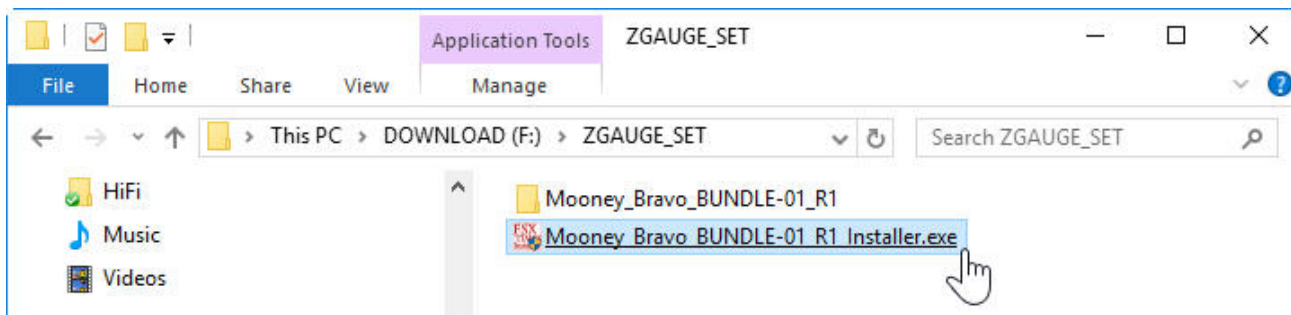
### INSTALLING GAUGES on Systems using SPAD.neXt

To run FIP gauges in SPAD.neXt, all gauges must be added to SPAD.neXt via its own built-in FIP feature.

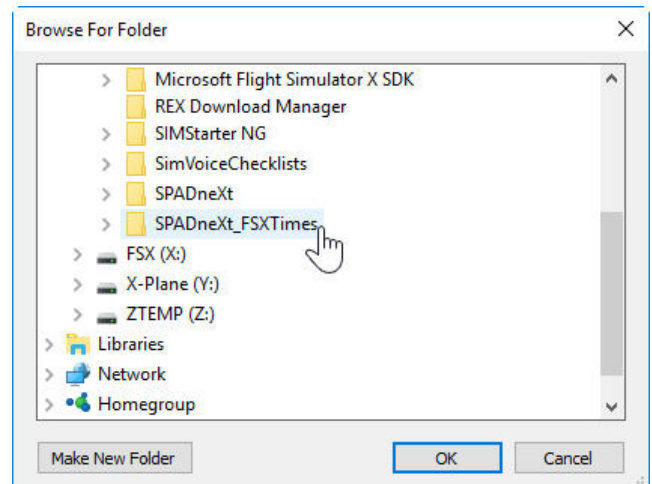
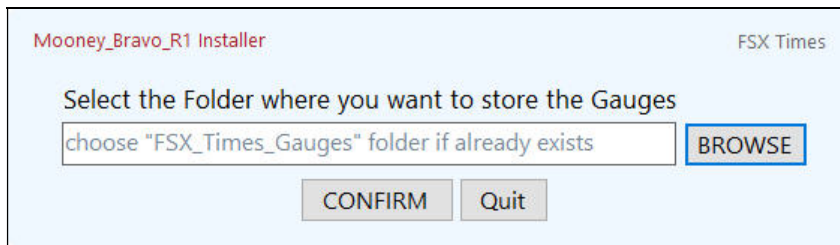
The installer coming with my gauges won't replace this function. Instead, it aims to help organizing the gauges so that they can be located easily when adding to SPAD.neXt.

Followings are the steps:

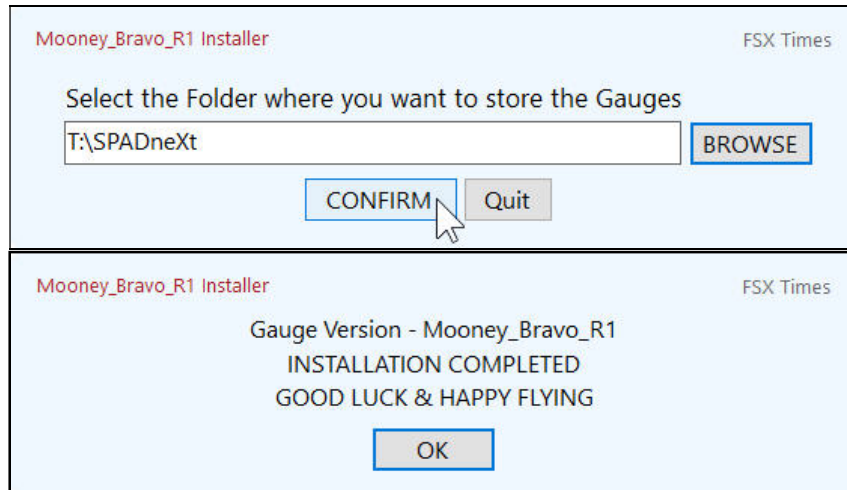
1. Unzip the gauge package to any location of your choice.
2. Run the installer in the package (e.g. **Mooney\_Bravo\_BUNDLE-01\_R1\_Installer.exe**)



3. Click on [BROWSE] to select the directory (e.g. **SPADneXt\_FSXTimes** on my T:\ drive) where you want to store the Gauges for later SPAD.neXt insertion.

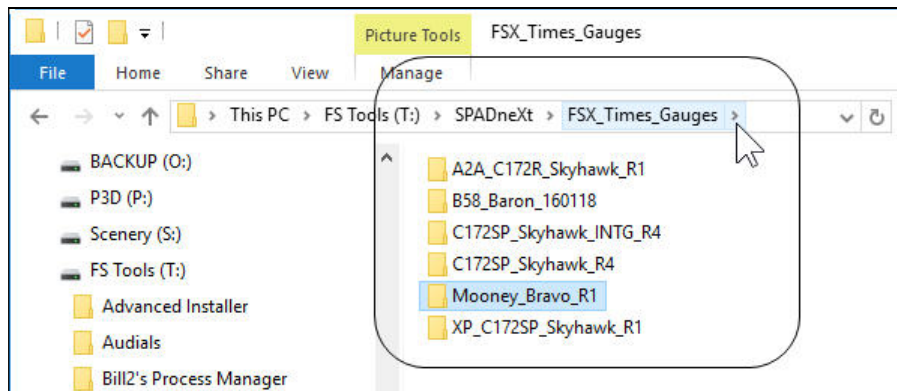


4. After choose the directory, click [CONFIRM] to continue. The gauges will be copied accordingly.



During the process, the installer will create a sub-folder called "FSX\_Times\_Gauges" under the directory that you select (e.g. T:\SPADneXt\FSX\_Times\_Gauges), and then copy the Gauges (e.g. Mooney\_Bravo\_R1 Gauges) onto it.

By choosing the same directory every time, all your gauges will be grouped together in an organized manner. The following image shows how my gauges are stored in my setup.



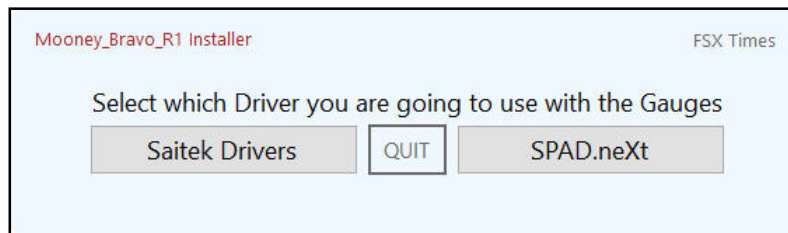
5. See **Appendix 2** below for instructions on adding Gauges to SPAD.neXt.

**NOTE:**

- If needed, re-run the installer again.
- Many of my gauges come with two versions (Clean and Extended). The Extended one has extra features on top of the basic functions. Try and choose the one that best fits your needs.
- If there are gauges coming with more than one files having similar names (e.g. B58\_ATT\_R4.xml and B58\_ATT\_R4\_SPNext.xml), choose the one with the notion of "**\_SPNext**" in their filenames, as they are specifically customized for SPAD.neXt. The other version (e.g. B58\_ATT\_R4.xml) will not run properly.

## Appendix 1

If the installer detects your system having both **Logitech Driver** and **SPAD.neXt** installed, the following menu will come up and ask you which driver system you are going to use with the gauges.



Make a selection, and follow the instructions in **SECTION 1** or **2** for Logitech Driver or **SECTION 3** for SPAD.neXt installation.

## Appendix 2

Followings are the steps to add Gauges to SPAD.neXt for your reference.

1. Start up SPAD.neXt with FIPs turned on
2. Go to the **FIPs** section in SPAD.neXt
3. Select the FIP(s) that you want to add the new gauge(s) to
4. Choose the **Add Gauge** option in the menu on the right
5. Click **Add Location** button on the left to select the directory you just created from the installer.

After specifying the directory where the Gauges are stored, you can then add the Gauges to SPAD.neXt.

## Appendix 3

ABOUT BACKING UP GAUGES on Systems using Logitech Driver

**"LogiFlightSimX.xml"** (or **"SaiFlightSimX.xml"**) is a critical file that contains the necessary information of the gauges being used on the FIPs.

When my gauges (either BUNDLE or SINGLE) are installed **THE VERY FIRST TIME**, the installer will create a sub-folder called **"LogiFlightSimX\_B4\_Backup"** (or **"SaiFlightSimX\_B4\_Backup"**) under the Logitech (or Saitek) driver directory, and copy the existing **"LogiFlightSimX.xml"** (or **"SaiFlightSimX.xml"**) onto it.

In addition, it will create a duplicate file called **"LogiFlightSimX\_Backup01.xml"** (or **"SaiFlightSimX\_Backup01.xml"**) from the existing **"LogiFlightSimX.xml"** (or **"SaiFlightSimX.xml"**) in the same directory as well.

The next time you run the installer, the Backup01 file will be renamed to Backup02, and a new Backup01 will be created from the most current **"LogiFlightSimX.xml"** (or **"SaiFlightSimX.xml"**) again.

This recurring process can generate up to 5 most current Backups (Backup01, Backup02 ... to ... Backup05) from succeeding installations, so that the LogiFlightSimX.xml (or "SaiFlightSimX.xml") can be properly protected.

\*\*\*\*\* IMPORTANT \*\*\*\*\*

DO NOT INTERRUPT the installation once the process has started. Otherwise, "LogiFlightSimX.xml NOT FOUND" (or "SaiFlightSimX.xml NOT FOUND") error will occur.

To correct this error, rename the "LogiFlightSimX\_Backup01.xml" (or "SaiFlightSimX\_Backup01.xml") back to "LogiFlightSimX.xml" (or "SaiFlightSimX.xml") again. That should solve the issue.

Remember, you still have your original "LogiFlightSimX.xml" (or "SaiFlightSimX.xml") that was saved in the "LogiFlightSimX\_B4\_Backup" (or "SaiFlightSimX\_B4\_Backup") folder before the installation, in case you need it.

=====

Again, thanks for supporting FSX Times. Should you have any question, feel free to contact me at [tom.fsxtimes@gmail.com](mailto:tom.fsxtimes@gmail.com)

Tom Tsui  
FSX Times